

## 3 SIXTY PERMANENT ANCHOR POINT

The 3 Sixty Permanent Anchor Point is ideally suited to maintenance personnel working at heights utilising a harness and lanyard fall protection system. The 22kN fall arrest rated anchor point incorporates a unique energy absorbing swivel eye lanyard attachment point, eliminating snap hook roll-out and providing uniform load distribution to the anchor plate and allowing fixture to lighter structures and roof decks.

- > Simple, quick installation
- > Swivel eye prevents snap hook roll-out
- > No on site assembly required
- > Low aesthetic profile – limiting visual impact
- > Varied roof deck fixing options
- > Uniform load distribution in the event of a fall

**“NEVER HAS SAFETY  
IN THE WORKPLACE  
HAD A HIGHER  
PRIORITY”**





## THE SAYFA WAY

SAYFA Systems is an Australian owned company which leads the market in design, production, supply and installation of quality and standards compliant Height Safety, Access and Fall Protection systems and solutions.

Our extensive range of products and services are well suited to industrial, commercial and domestic applications, providing a high level of safety and confidence for all personnel involved in the workplace. Having gained first hand experience and understanding of product requirements, being actively involved in the day to day industry activities, we are able to incorporate that vital 'know how' into the design and development of innovative, easy to install and user friendly systems.

Sayfa is committed to excellent customer support at all levels - **client, installer and user.**

## FEATURES & BENEFITS

Unique features deliver the following benefits:

- > Multidirectional loading – 22kN fall arrest rated
- > Unique energy absorbing swivel eye attachment point 'follows' operator in any direction, eliminating possibility of snap hook roll-out
- > Uniform load distribution to anchor plate and structure in the event of a fall
- > Multiple fixing points to suit varied roof profiles
- > Quick and simple installation
- > Pre-assembled unit – no on site assembly required
- > Pre-packaged in fives for safe, easy handling
- > All fixings and seals included – to suit steel or timber structure
- > Low profiled, unobtrusive and easily powder coated

# ACCESS THE SAYFA® WAY INNOVATIVE, MODULAR ROOF ACCESS AND FALL PROTECTION SYSTEMS



Gesipa hand riveter



Gesipa battery riveter



Gesipa rivet detail

## APPLICATIONS

The 3 Sixty Anchor prevents access beyond a fall edge by utilising a suitable travel restraint lanyard and harness system.

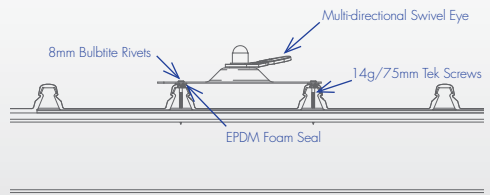
Applications include:

- > General roof and gutter maintenance
- > Maintenance of roof solar panels
- > Access and protection to roof mounted plant and equipment
- > Protection while maintaining surveillance equipment and antennas

## INSTALLATION

Installation is simplified due to 3 Sixty's unique design and advanced fabrication process.

- > (8) x 8mm Bulbrite rivets fixed to roof deck with (2) x 14g/75mm Tek screws fixed to roof deck support structure.
- > Steel/timber fixings and seals included in package



CALL \ 1300 301 755

# 3 SIXTY SPECIFICATION GUIDE

Supply and install the proprietary 3 Sixty Anchor Point as per manufacturer, Sayfa Systems, recommendations. Anchorage Point to incorporate an energy absorbing swivel eye attachment point connected to the profiled stainless steel base plate, to prevent snap hook roll-out. Device to incorporate a series of fixing holes to ensure secure installation, utilising construction grade Bulbrite rivets and Tek screws. Exact anchor location and fixing method to be determined by competent person at the time of installation. (Refer instruction manual.)

## PRODUCT & SPECIFICATION CODE

3 Sixty Anchor Point (AP130)

## MATERIAL

Base plate – profiled stainless steel  
Swivel eye – profiled stainless steel

## DIMENSIONS

Total height – 50mm  
Overall size – 290mm x 285mm

## WEIGHT

1.05kg (excludes fixings)

## FIXINGS

Timber fixing – 14g/ 75mm Type 17 Tek screws  
Metal fixing – 14g/ 75mm self drilling Tek screws  
Metal fixing – 8mm construction grade Bulbrite rivets  
(Refer instruction manual.)

## WORKING LOAD LIMIT

Recommended for single person use – 22kN rated.

- > Support structure integrity, suitability and fixing method to be assessed and determined by a competent person prior to installation
- > 3 Sixty Anchor Point must be used in conjunction with an approved harness and lanyard system incorporating an energy absorber

## COMPLIANCE

3 Sixty Anchor Point is designed and manufactured generally in accordance with requirements of Australian Standard AS/NZS 1891.4:2009 and relevant statutory OHS Codes of Practice/Guidelines.

## TESTING

Testing and performance based on requirements of Australian Standard AS/NZS1891.4:2009.

- > Dynamic load tested – 15kN  
Resultant load on structure – 7.4kN
- > Dynamic load tested – 22kN  
Resultant load on structure – 10.4kN

## PRODUCT WARRANTY

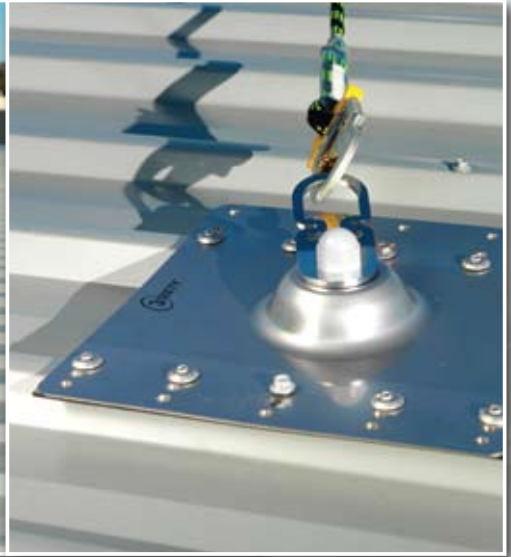
3 years from date of purchase subject to correct installation, use and maintenance in accordance with manufacturer's specifications and recommendations.

## INSPECTION AND MAINTENANCE

Inspection and certification every 12 months by competent person in accordance with manufacturer's specifications and requirements of Australian Standard AS/NZS 1891.4:2009 Section (9).  
(Refer instruction manual.)

*Designed and manufactured  
by Sayfa Systems*

44 Kalman Drive,  
Boronia VIC 3155  
T \ 1300 301 755  
F \ 1300 881 092  
E \ [info@sayfa.com.au](mailto:info@sayfa.com.au)  
W \ [www.sayfa.com.au](http://www.sayfa.com.au)



## 3 SIXTY® SURFACE MOUNT ANCHOR POINT

The 3 Sixty Permanent Anchor Point is ideally suited to maintenance personnel working at heights utilising a harness and lanyard fall protection system.

The 22kN rated anchor point incorporates a unique energy absorbing swivel eye lanyard attachment point, providing uniform load distribution to the anchor plate and allowing fixture to lighter structures and roof decks.

- > Simple, quick installation
- > No on site assembly required
- > Low aesthetic profile - limiting visual impact
- > Varied roof deck fixing options
- > Uniform load distribution in the event of a fall

## SPECIFICATION CODE

3 Sixty Anchor (AP130)

## Specification Summary

Supply and install the proprietary 3 Sixty Anchor Point as per manufacturer, Sayfa Systems, recommendations. Anchor Point to incorporate an energy absorbing swivel eye lanyard attachment point connected to the profiled stainless steel base plate. Device to incorporate a series of fixing holes to ensure compatible roofdeck installation, utilising construction grade Bulbrite rivets and Tek screws. Exact anchor location and fixing method to be determined by competent person at the time of installation. (Refer instruction manual.)

## System Applications

- > General roof and gutter maintenance
- > Maintenance of roof solar panels
- > Access and protection to roof mounted plant and equipment
- > Protection while maintaining surveillance equipment and antennas

## Technical Data

### Material

Base plate – profiled stainless steel  
Swivel eye – profiled stainless steel

### Dimensions

Total height – 50mm  
Overall size – 290mm x 285mm

### Weight

1.05kg (excludes fixings)

### Fixings

Timber fixing – 14g/ 75mm type 17 Tek screws  
Metal fixing – 14g/ 75mm self drilling Tek screws  
Metal roof deck fixing – 8mm construction grade Bulbrite rivets (Refer instruction manual.)

### Working Load Limit

Recommended for single person use – 22kN rated.

- > Support structure integrity, suitability and fixing method to be assessed and determined by a competent person prior to installation
- > 3 Sixty Anchor Point must be used in conjunction with an approved harness and lanyard system incorporating an energy absorber

## Compliance

3 Sixty Anchor Point is designed and manufactured generally in accordance with requirements of Australian Standard AS/NZS 1891.4:2009 and relevant statutory OHS Codes of Practice/Guidelines.

## Testing

Testing and performance based on requirements of Australian Standard AS/NZS 1891.4:2009.

- > Dynamic load tested – 15kN  
Resultant load on structure – 7.4kN
- > Dynamic load tested – 22kN  
Resultant load on structure – 10.4kN

## Product Warranty

3 years from date of purchase subject to correct installation, use and maintenance in accordance with manufacturer's specifications and recommendations. (Refer instruction manual.)

## Inspection and Maintenance

Inspection and certification every 12 months by competent person in accordance with manufacturer's specifications and requirements of Australian Standard AS/NZS 1891.4:2009 Section (9). (Refer instruction manual.)

## Important Note

Failure to supply and/or install proprietary product in accordance with above standards and codes, specifications and instructions voids complete system certification and/or warranty.

## Technical Support

### Sayfa Systems

T \ 1300 301 755  
F \ 1300 881 092  
E \ technical@sayfa.com.au  
W \ www.sayfa.com.au

*Designed and manufactured by Sayfa Systems*